

Nayantara Memorial Charitable Trust (NMCT) **Plans a New Campus "The Ashram"**

Supportive Education Program (SEP): 2008 - today

Since 2008, when NMCT had launched its SEP in the 14 tribal villages of Chaupahari Jungle of Illambazar Block, Birbhum, the scene of education amongst its villagers have come a long way. Whereas in 2008 only 2 out of 3,500 villagers had record of High School passed, as of date, there are 93 proud boys and girls who aspire for higher studies. The school dropout rate has also nosedived from a dismal near 100% to below 20%.

This satisfying outcome could well be attributed to a major decision taken by NMCT in 2011. It realized that the pre-requisite for better performance of the final examinees was to dissociate them from their home atmosphere of obvious distracting priorities at least during the last leg of four months. NMCT thus took upon itself to provide residential facility and food etc. and engaged the students in rigorous round the clock coaching.

NMCT records its gratitude to Jamsedji Tata Trust, Gram Bangla Unnayan Udyog (GRABUU) and UTSOV Inc who financially supported this move.

Urge for a new campus

Success always demands more. With the growing number of High School Examinees (18 in 2021), the current infrastructure at NMCT has fallen short. Besides, NMCT is contemplating to stretch the residential facility from present 4 months to 2 years (Class IX and X) to bring out the best of the students and improve their results qualitatively. Encouragingly, students who are pursuing education beyond Class X, are also expecting NMCT's residential facility till they appear for Class XII exam.

Hence NMCT has dreamt for augmenting its infrastructural facility and bring out a humble need based 'Ashramik' campus to accommodate the students' needs for today and in the medium term.

The proposed campus 'The ASHRAM'

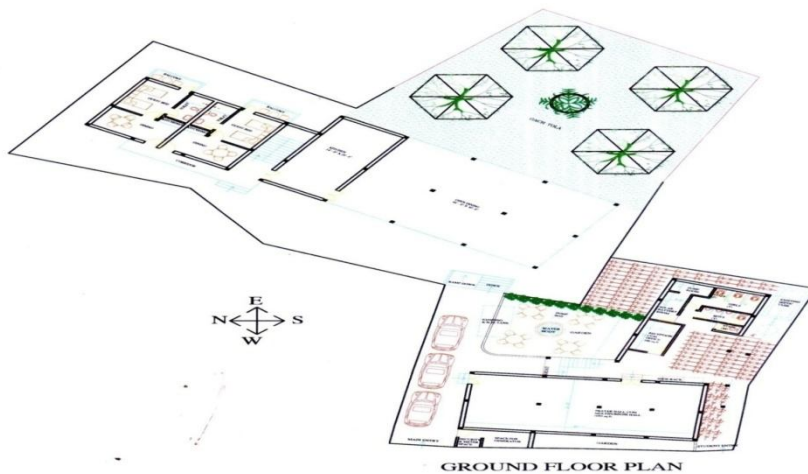
NMCT has procured a 9 cottah (15 cents) land adjacent to its present set up in Daronda village and plans to build a new campus (9,900 sq ft covered). The present set up (2,100 sq ft covered) and the annex will provide the below mentioned facilities:

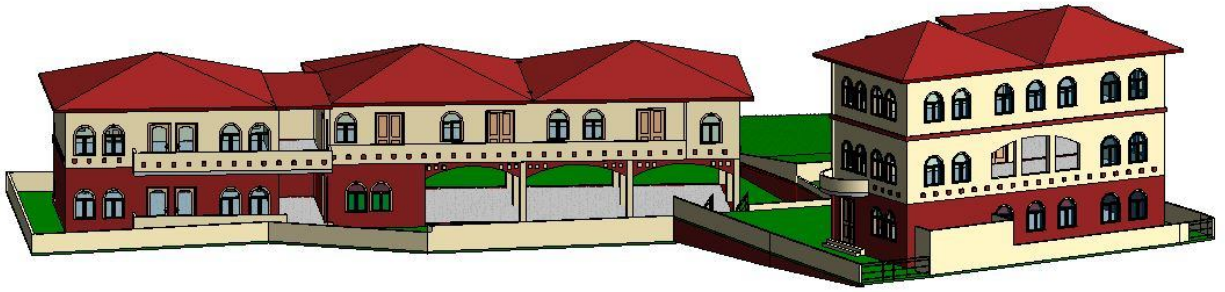
1. A Dormitory for 30 girls
2. A Dormitory for 20 boys
3. A Female Volunteers / Wardens' room
4. A Male Volunteers / Wardens' room
5. A Multipurpose Hall for Dining etc. and a Kitchen to accommodate 100 students
6. A Computer Lab
7. An Education Lab
8. A Science Lab
9. A Library
10. A Prayer Hall
11. A Conference Room &
12. 4 Guest Rooms

Estimated Budget

S No	Facility	Block And Floor	Estimated Cost In Lakh
	Dinning Unit <ul style="list-style-type: none"> • Kitchen • Dinning Hall 	Eastern Block Ground Floor	20
	Guest Unit <ul style="list-style-type: none"> • Guest Rooms (2) 	Eastern Block Ground Floor	12
	<ul style="list-style-type: none"> • Reception Cum Show Room • Utility Units • Cycle Stand • Toilet 	South Block Ground Floor	6
	<ul style="list-style-type: none"> • Prayer Hall 	West Block Ground Floor	1
	<ul style="list-style-type: none"> • Girls Dorm • Store • Female Warden / Volunteers Room • Toilet 	Eastern Block First Floor	20
	Guest Unit <ul style="list-style-type: none"> • Guest Rooms (2) 	Eastern Block First Floor	12
	<ul style="list-style-type: none"> • Computer Lab • Education Cum Science Lab • Toilet 	South Block First Floor	12
	<ul style="list-style-type: none"> • Library • Conference Cum Meeting Room • Teachers Room Cum Office 	West Block First Floor	3
	<ul style="list-style-type: none"> • Boys Dorm • Store • Male Warden / Volunteers Room • Toilet • Terrace 	West Block Second Floor	12
	<ul style="list-style-type: none"> • Contingencies 		2
	<ul style="list-style-type: none"> • Total 		100

The proposed plan....

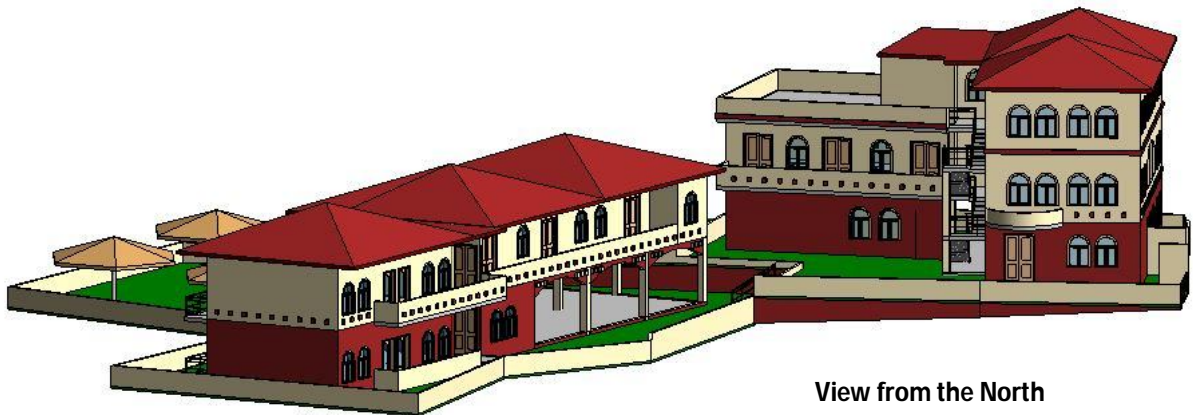




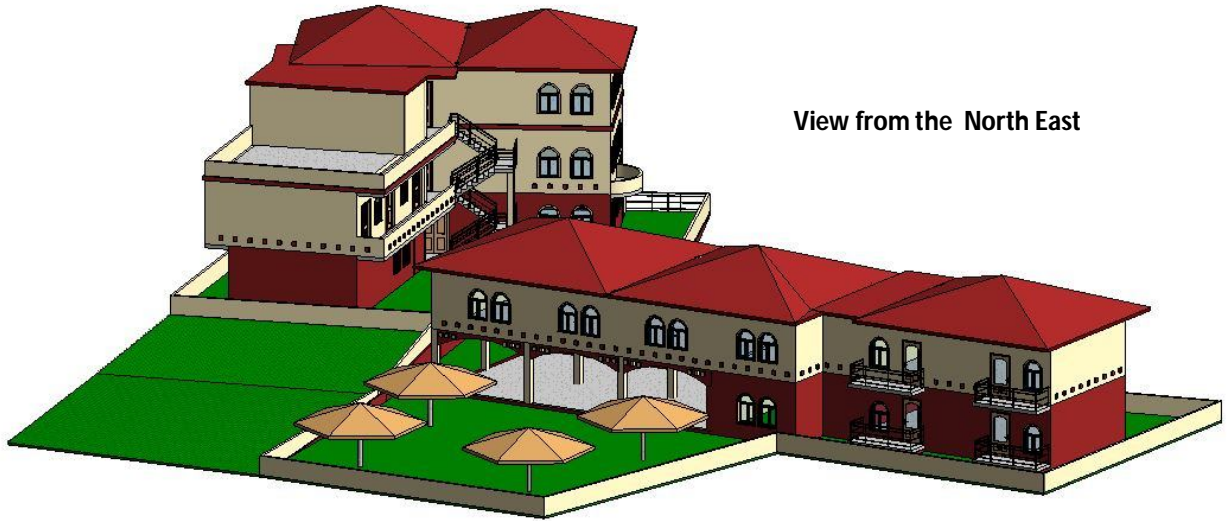
View from the Front



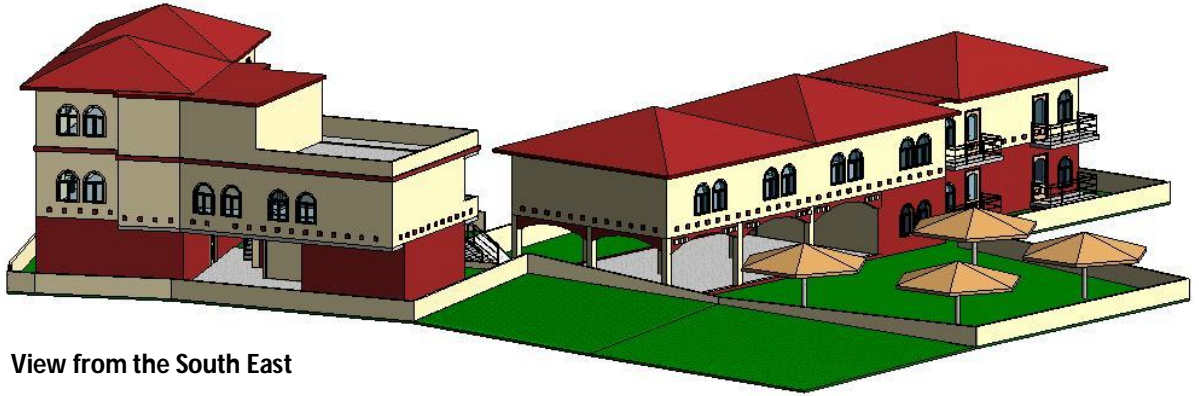
View from the West



View from the North



View from the North East



View from the South East



28/6/20

• 28/6/20